





EXHIBIT A

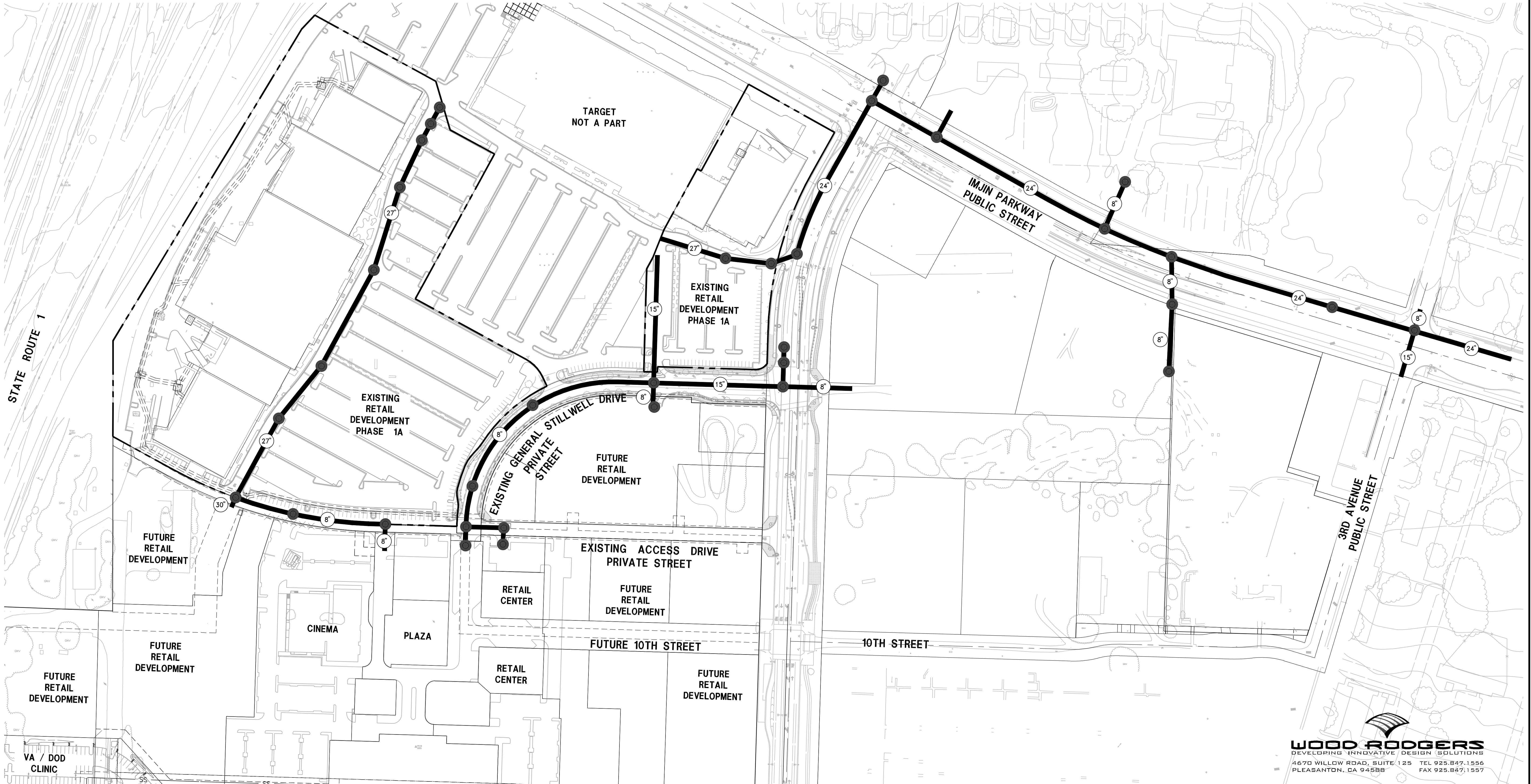
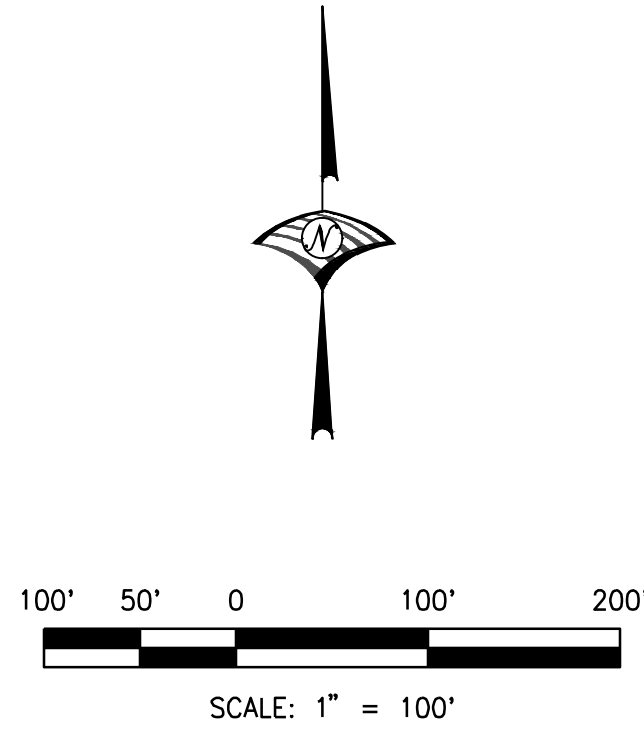
SANITARY SEWER SYSTEM


THE DUNES ON MONTEREY BAY PHASE 1A - COMMERCIAL FAST TRACK

SHEA MARINA VILLAGE, LLC
CITY OF MARINA CALIFORNIA
DECEMBER 2015

LEGEND

-  SANITARY SEWER PIPELINES TO BE TRANSFERRED
-  PROJECT BOUNDARY
-  SANITARY SEWER PIPE SIZE (OF X" DIAMETER)
-  SANITARY SEWER MANHOLE




WOOD RODGERS
DEVELOPING INNOVATIVE DESIGN SOLUTIONS
4670 WILLOW ROAD, SUITE 125 TEL 925.847.1556
PLEASANTON, CA 94588 FAX 925.847.1557

J:\0889 Dunes At Monterey Bay\0889_001_DMB-MMC\Civil\Exhibits\EXHIBIT A - PHASE 1A - SEWER SYSTEM - FINAL.dwg 12/23/2015 1:38 PM Kerrie Mosco

EXHIBIT B

DOMESTIC WATER SYSTEM

THE DUNES ON MONTEREY BAY

PHASE 1A - COMMERCIAL FAST TRACK




SHEA MARINA VILLAGE, LLC

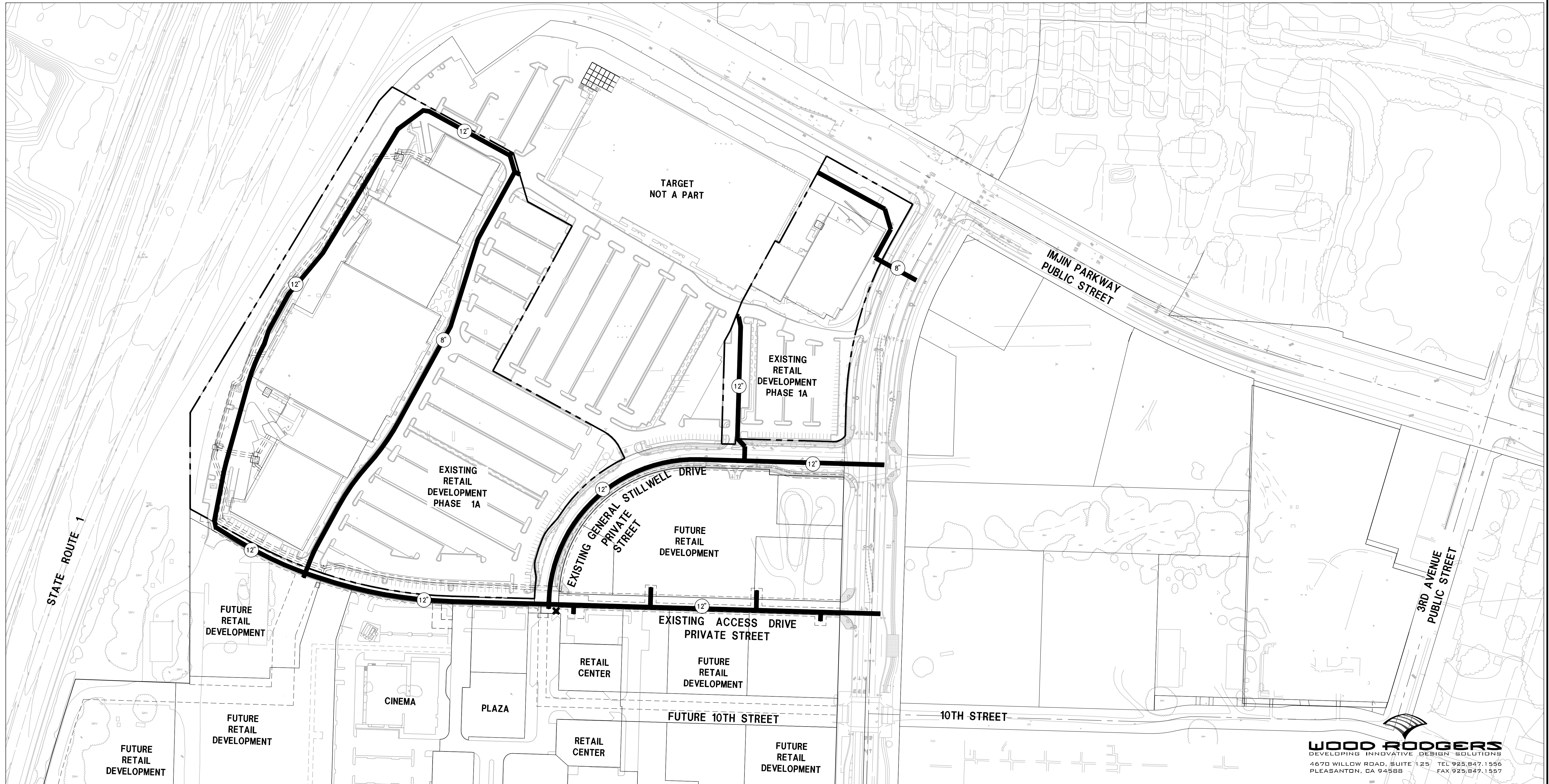
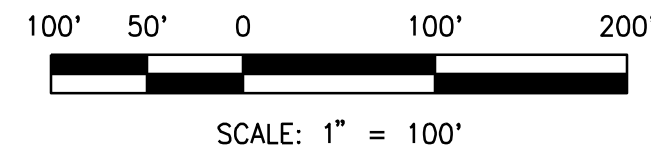
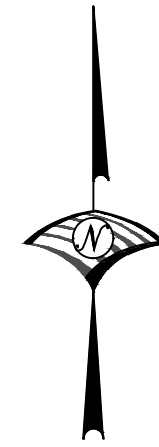
CITY OF MARINA

CALIFORNIA

DECEMBER 2015

LEGEND

-  DOMESTIC WATER PIPELINES
-  PROJECT BOUNDARY
-  DOMESTIC WATER PIPE SIZE (OF X" DIAMETER)



WOOD RODGERS
DEVELOPING INNOVATIVE DESIGN SOLUTIONS
4670 WILLOW ROAD, SUITE 125 TEL 925.847.1556
PLEASANTON, CA 94588 FAX 925.847.1557

J:\0889 Dunes At Monterey Bay\0889 001_DMB-MMC\Civil\Embuds EXH-B-DMB-PHASE1A-WATERSYSTEM-FINAL.dwg 12/14/2015 3:19 PM Karrie Mosco

EXHIBIT C

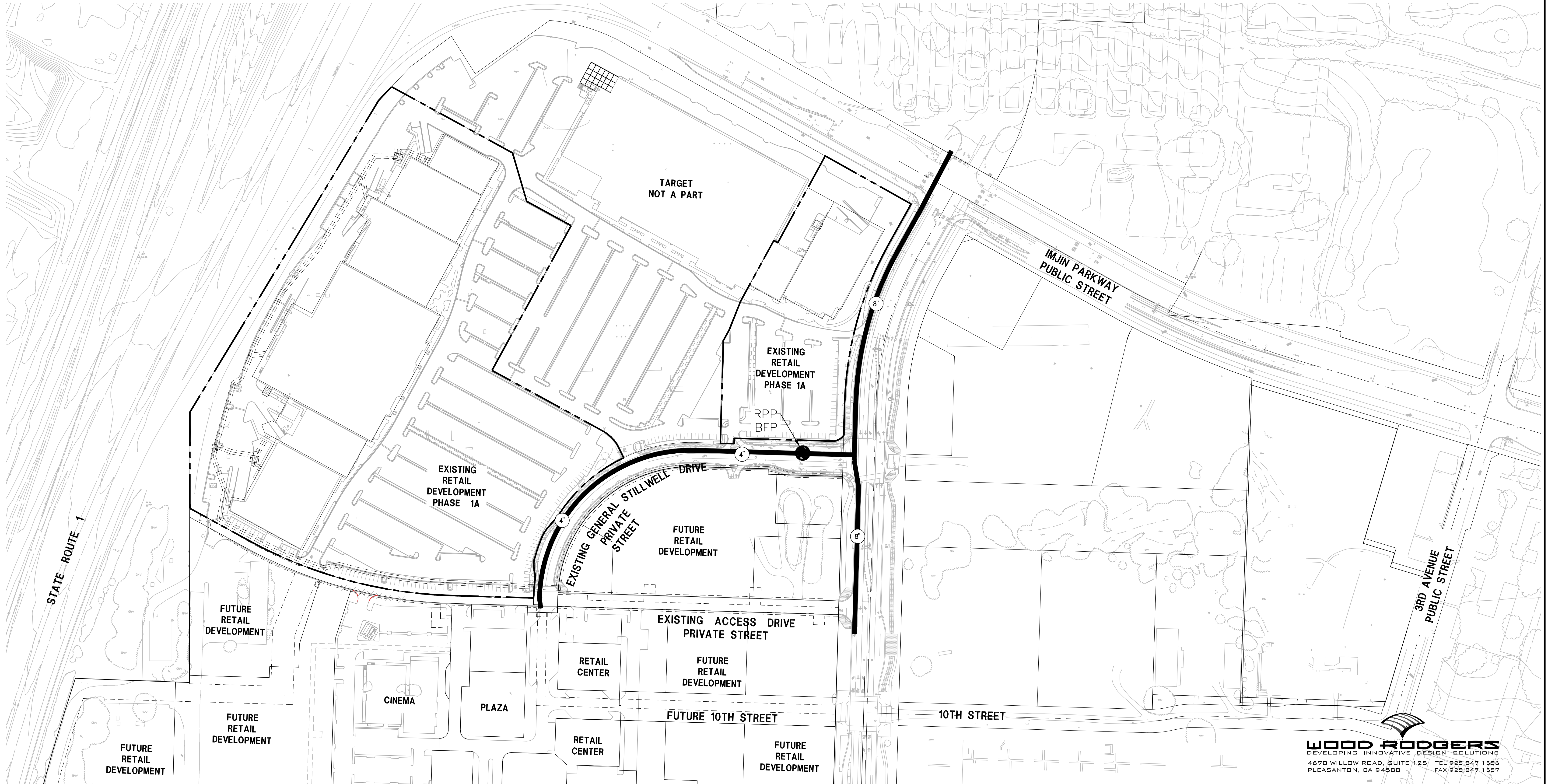
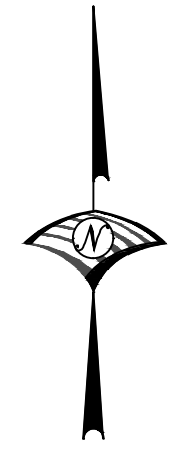
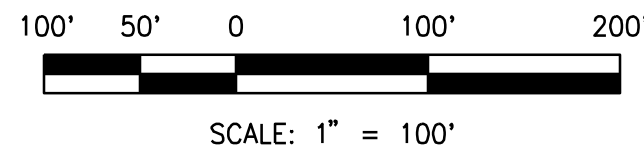
RECYCLED WATER SYSTEM

THE DUNES ON MONTEREY BAY PHASE 1A - COMMERCIAL FAST TRACK

SHEA MARINA VILLAGE, LLC
CITY OF MARINA CALIFORNIA
DECEMBER 2015

LEGEND

- RECYCLED WATER PIPELINES
- - - PROJECT BOUNDARY
- (X) RECYCLED WATER PIPE SIZE (OF X" DIAMETER)



WOOD RODGERS
DEVELOPING INNOVATIVE DESIGN SOLUTIONS
4670 WILLOW ROAD, SUITE 125 TEL 925.847.1556
PLEASANTON, CA 94588 FAX 925.847.1557

J:\0889_Dunes At Monterey Bay\0889_001_DMB-MMC\Civil\Exhibits\EXH-C-DB-Phase1A-RecycledWaterSystem-FINAL.dwg 12/17/2015 3:25 PM Kerrie Mosco